



# Social Work Scotland Self-Directed Support Project

**SDS Scotland National Voice - Workshop**

**Self-Directed Support Framework of Standards  
A Catalyst for Change**

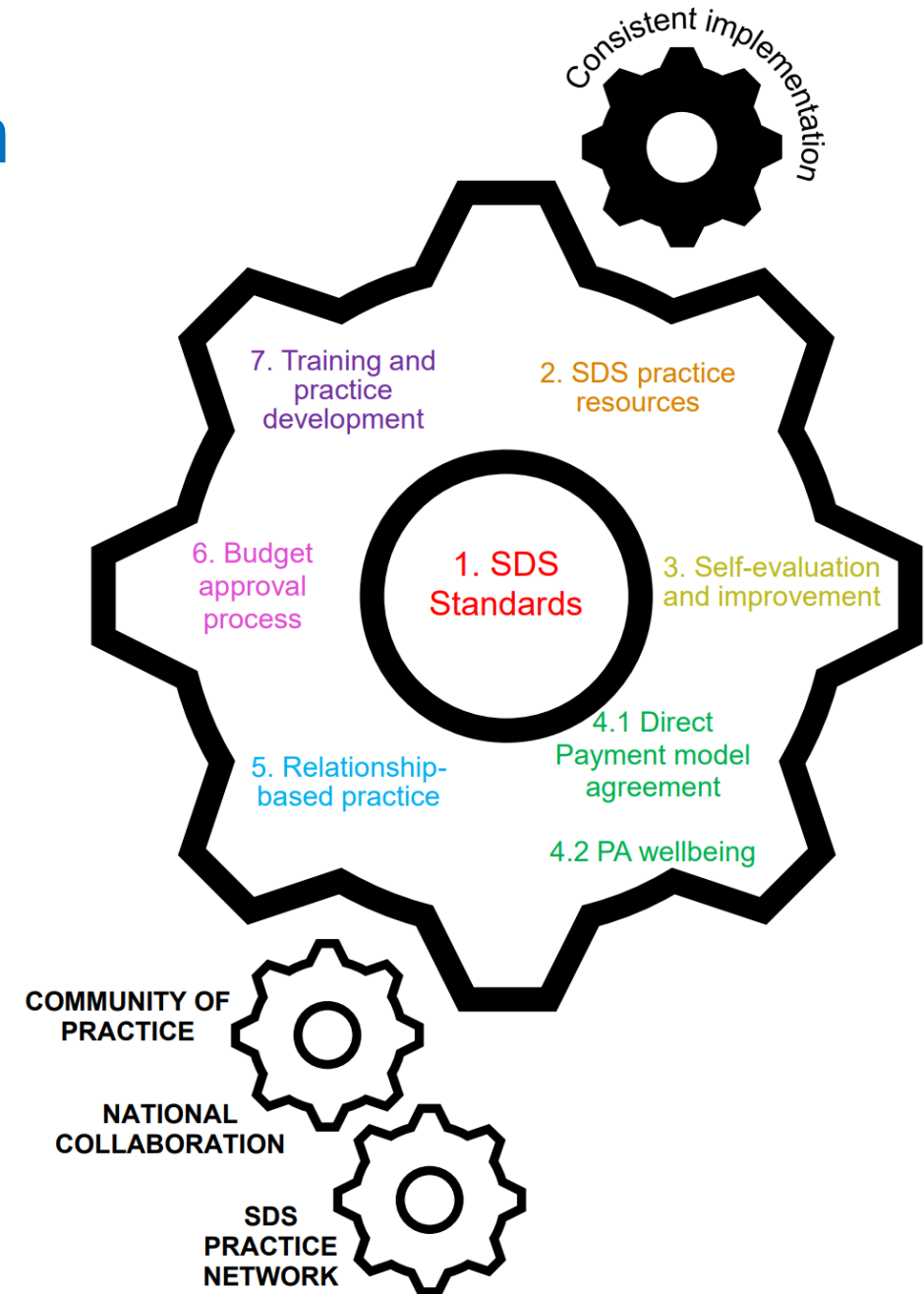
19<sup>th</sup> March 2025

Donna Murray and Laura Finnan Cowan, Project Officers

# SDS Project Team - Our Approach

We are supporting local partnerships to implement the national Self-directed Support standards in three ways:

- Improvement workstreams
- Community of Practice
- National Collaboration



# Self-directed Support toolkit



## Table of Contents

<b>Why Do We Need a Toolkit?</b>	3
<b>The Current Self-directed Support Landscape</b>	5
<b>Key Self-directed Support Messages for Practitioners</b>	8
<b>Understanding How to Use Self-directed Support</b>	12
1. Early Help and Support	12
2. The Assessment	14
3. Explaining the four Self-directed Support options	25
4. Reviews	28
5. Challenging Decisions	29
<b>Making SDS Relevant and Accessible for All</b>	31
6. Supporting People with Sensory Loss	31
7. Supporting People with Mental Health Conditions	38
8. Supporting Unpaid Carers	47
9. Black, Asian and Minority Ethnic Communities	52
<b>Contributors</b>	57

# Self-directed Support Framework of Standards



## Self-directed Support Framework of Standards



Easy Read



## 13 Self-directed Support Standard 13

When direct payments are used to employ Personal Assistants (PAs)



Easy Read

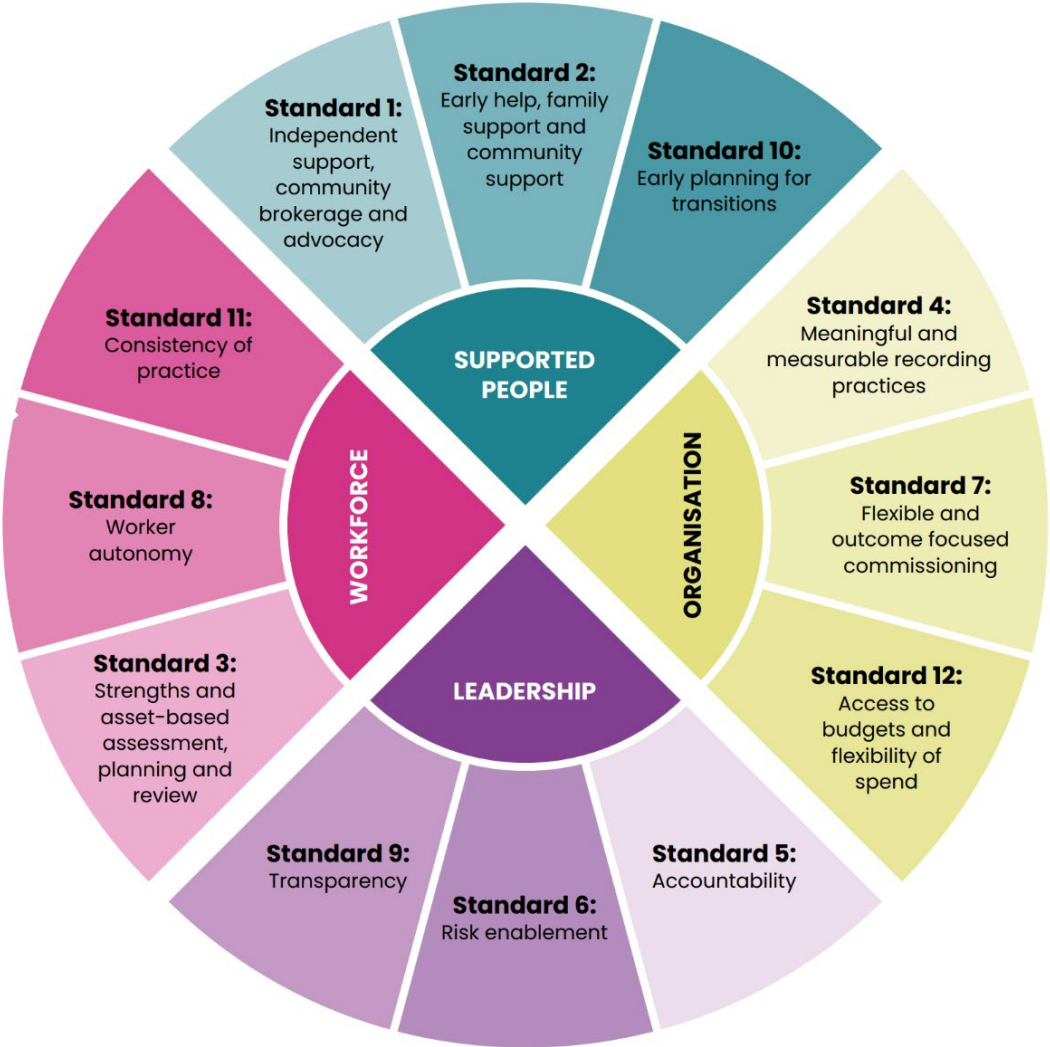




# SDS standards stakeholders



# SDS Standards Wheel





# Strengths and asset-based assessment, planning and review

**Standard descriptor:** Trust-based relationships and good conversations between workers and people are at the heart of assessment, planning and review. Outcomes are agreed on the basis of what matters to the person or in achieving a child and young person's potential.



**Practice statement:** Assessment, planning and review systems and processes are personalised, recognising people's strengths, assets and talents, family and natural networks and existing community supports, resulting in agreed outcomes that meet their human rights.

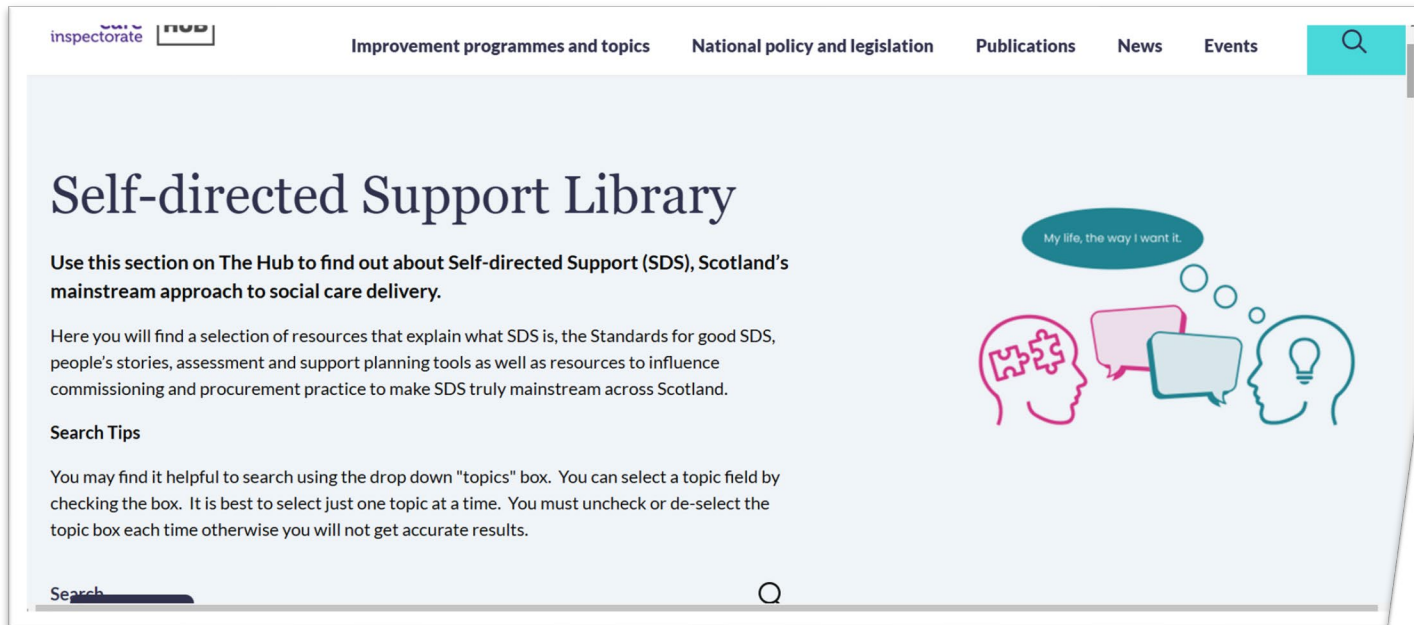


# What next?



- Connecting with colleagues who don't want more guidance
- Collaborating with other policy teams: children and families policy, GIRFE
- Connecting with SDS National Collaboration and independent support
- Challenging ourselves with case studies and practice examples
- Communities of Practice: Peer learning, seminars, events, roadshows
- Dedicated Children and Families SDS Community of Practice
- Use of the SDS Learning and Improvement Framework



# Self-directed Support Library



The screenshot shows the website's navigation bar with links for 'Improvement programmes and topics', 'National policy and legislation', 'Publications', 'News', and 'Events'. The main heading is 'Self-directed Support Library'. Below it, a text block explains the purpose of the section. A search bar is visible at the bottom left.

inspectorate  

Improvement programmes and topics National policy and legislation Publications News Events

## Self-directed Support Library

Use this section on The Hub to find out about Self-directed Support (SDS), Scotland's mainstream approach to social care delivery.

Here you will find a selection of resources that explain what SDS is, the Standards for good SDS, people's stories, assessment and support planning tools as well as resources to influence commissioning and procurement practice to make SDS truly mainstream across Scotland.

**Search Tips**

You may find it helpful to search using the drop down "topics" box. You can select a topic field by checking the box. It is best to select just one topic at a time. You must uncheck or de-select the topic box each time otherwise you will not get accurate results.

Search



The image shows three overlapping document covers. The top cover is titled 'Reflections on Practice - Self-Directed Support Across Scotland' and 'Supporting people to live good lives across Highland'. The middle cover is titled 'Reflections on Practice - Self-Directed Support Across Scotland' and 'Flexible use of Direct Payments across Scotland'. The bottom cover is titled 'Reflections on Practice' and 'Risk enablement Flexible and outcome-focused commissioning Worker autonomy Early planning for transitions'.

social work  scotland  
Leading the profession

### Reflections on Practice - Self-Directed Support Across Scotland

Supporting people to live good lives across Highland

Issued: March 2024

We conducted a self-evaluation of our social care system across all the SDS standards. However, in the process of engaging staff in the process we did narrow our focus on those areas which staff identified as having the greatest room for improvement. Therefore a particular focus was given to the following sub-set of standards:

- SDS Standard 6: Risk enablement
- SDS Standard 7: Flexible and outcome-focused commissioning
- SDS Standard 8: Worker autonomy
- SDS Standard 10: Early planning for transitions.

The Social Work Scotland Self-Directed Support Practice Network provides thinking space and peer learning opportunities for those people leading on the development of SDS from around Scotland. Being actively involved in the Practice Network has led to more creatively about meeting SDS leads thinking differently and personal outcomes through flexible use of Self-directed Support options, particularly Direct Payments (Option 1).

Our work links with

- SDS Standard 3: Strength- and asset-based assessment, planning and review
- SDS Standard 8: Worker autonomy
- SDS Standard 12: Access to budgets and flexibility of spend

My life, the way I want it.

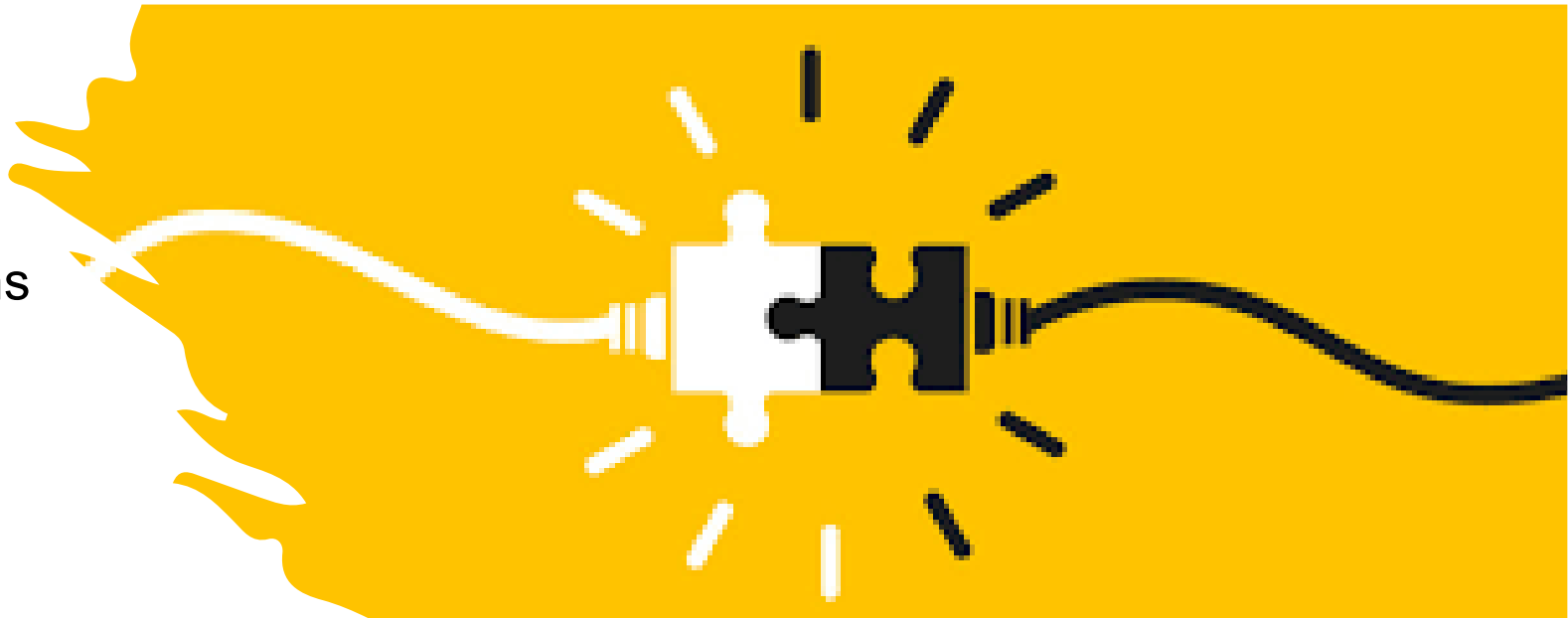
Reflections on Practice

# Making the Standards real

1. What challenges do you see in implementing the SDS Standards?

2. How can you use the SDS Standards to connect and collaborate with?

- supported people and carers
- social workers
- independent support
- Disabled Peoples' Organisations
- health
- care providers
- leaders
- Scottish Government





**THANK YOU!**

**[sds.team@socialworkscotland.org](mailto:sds.team@socialworkscotland.org)**

## Just for notes and thoughts

**Connect** – to understand what the issues are, what better looks like, who is involved, create and maintain relationships, unite on improvement ( where and how do we do this developing the standards)

**Collaborate** – to improve, to work together on a collective vision, share the workload, be accountable, shared ownership, help each other ) co production approach, COP, SDS NC, SDS Practice Network, Workstreams, SWS, SG, COSLA)

**Challenge** - where it isn't working call it out, confront, practice that isn't in line with what good looks like , collective effort to improve ( using the standards, LIF )

